



Simpler Recycling

Compliance checker

Waste law in England is changing at the **end of March 2025**. These changes mean all our sites in England will need to segregate their waste into general waste, recycling (mixed or segregated), and food. **We have a legal responsibility to separate any waste we create.**

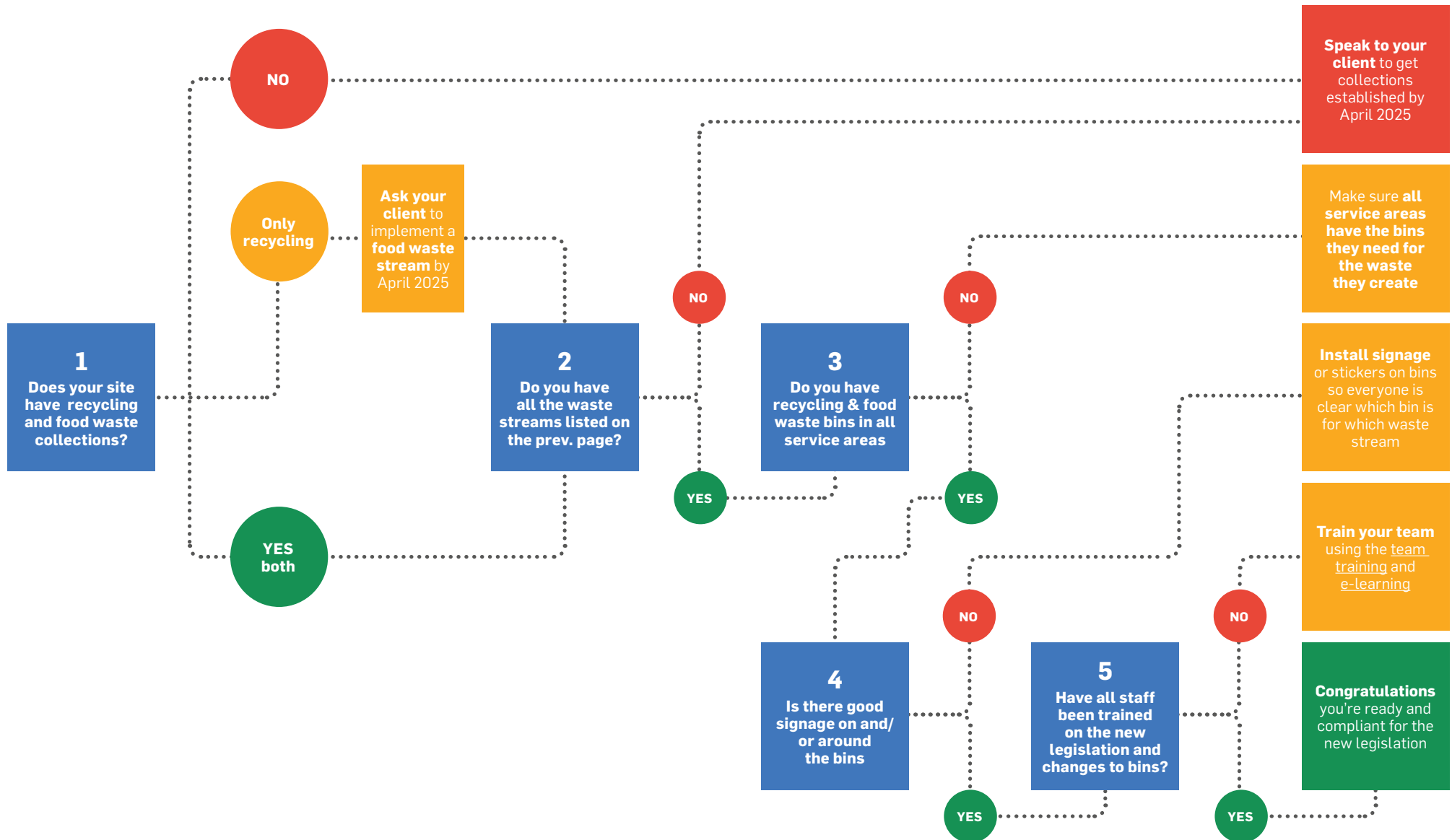
Waste streams you must have

All sites must have access to, and segregate their waste into, the following waste streams **by the end of March 2025**:

PAPER & CARD	MIXED RECYCLING*			FOOD	GENERAL WASTE
	GLASS	PLASTIC	METAL		
					

* Your client may provide recycling as **one mixed bin, or as separate bins**. It's critical you know how your client needs you to segregate your waste, **otherwise you may risk a fine**.

Use this compliance checker to check whether you're ready for the **Simpler Recycling** legislation, coming into force at the **end of March 2025**.

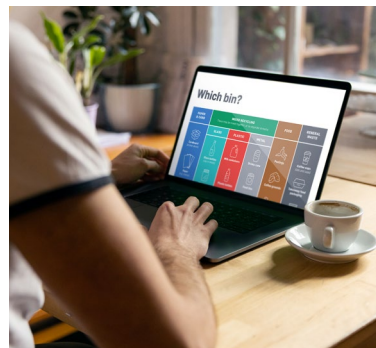




Library of resources



[Simpler Recycling guide](#)



[Simpler Recycling e-learning](#)



[Simpler Recycling 'Which bin?' BOH poster](#)



[Simpler Recycling team training](#)

Simpler Recycling Training