

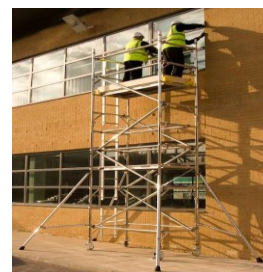
Toolbox Talk

65. Scaffold Towers (Mobile)



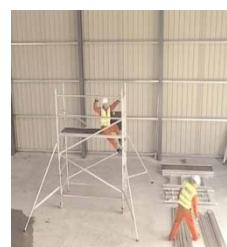
What?

- Mobile scaffold towers are widely used throughout industry and provide an effective and safe means of gaining access to work at height
- Towers rely on all parts being in place to ensure adequate strength, they can collapse if sections are left out
- They also provide a secure and safe place of work at height without the need for additional precautions



Why?

- People may choose the wrong equipment when working at height and fall off resulting in serious and sometimes fatal injury
- When selecting the correct equipment for the task consideration must be given to how the work will be done. If the work requires using both hands scaffold towers should be used rather than ladders since ladders are primarily for access or short duration work involving single-handed tasks
- Ladders or other objects must not be placed on scaffolds to increase height



Do



- ✓ Ensure the tower is erected by a competent trained person
- ✓ Check the tower is level and stable before working on it
- ✓ Ensure that all wheels are locked
- ✓ Check no one is on the tower when moving it
- ✓ Make sure the "free standing" height is not more than the smallest base dimensions
- ✓ Check that the ladder system has been properly installed
- ✓ Check the working platform covers the full width of the tower
- ✓ Report any damage immediately

Don't



- ✗ Move a tower with people, materials and equipment on the work platform
- ✗ Climb the outside structure of a tower
- ✗ Try to mix parts from different types of tower
- ✗ Remove parts unless authorised
- ✗ Step above the platform height
- ✗ Place ladders on the platform



Document Name	TBT 65 Scaffold Towers (Mobile)	Document No	FM/HS/TBT/067
Document Owner	Stuart Care	Date of Issue	13/01/2017
Classification	Internal Use	Version No	01