

foodbuy

PPE Product Guide



2020

BUNZL **LOCKHART**
Catering Equipment

Order online: www.lockhart.co.uk

Call our Sales Team on Tel: **03701 667 277**

CONTENTS



Womens Footwear	3
Footwear	4-5
Wearertech	6-7

FOOTWEAR

Hand Protection 9-16

GLOVES



Clothing	17-19
Womens Clothing	23-26

CLOTHING

PPE 20-22

PPE



Personal Protective Equipment (PPE) is an integral part of the safety risk management process and therefore the range of what is offered is under constant review. Compass UK and the HSE team is pleased to launch a new range of industry leading PPE which is more comfortable and practical whilst still offering the necessary protection.

The range, which includes adjustable safety goggles, a new range of slip-resistant shoes, protective gloves including cut resistant gloves and a selection of oven gloves, supports Compass' 'safety first' ethos and was created following a review of previous PPE provision and the more specific requirements of our female colleagues.

Mark Armstrong, HSE Director at Compass Group UK & Ireland, said: "We're committed to continually enhancing the support we provide to our colleagues to make their working environment comfortable and safe and the introduction of this new PPE is a great reflection of this continuing commitment. on improving the level of 'care' Compass demonstrate to their workforce We're really proud of the new range and have already received fantastic feedback from colleagues across the business."

The new ranges of PPE have been created with the support of Compass Group UK & Ireland's HSE team, Foodbuy team and national distribution and outsourcing company, Bunzl Lockhart.



Womens Footwear 3
Footwear 3-9

WOMENS SHOES



Shoe Soft Toe Ladies Mjane Anti-slip
Formal FOH/Hospitality

Q2296-4	Q2296-7
Q2296-5	Q2296-8
Q2296-6	Q2296-9



Kora Female Non Slip Dress Shoe
Formal FOH/Hospitality

Q2349-2.5	Q2296-6
Q2296-3	Q2296-7
Q2296-4	Q2296-8
Q2296-5	



Liberty Female Antislip Trainer

Q2339-2.5	Q2339-6
Q2339-3	Q2339-7
Q2339-4	Q2339-8
Q2339-5	

Please quote the code for the style required followed by a dash and relevant size. e.g product code Q2338 in size 8, quote Q2338-8



Freestyle II Male Antislip Trainer

Kitchens, informal FOH and cleaners where a protective toecap is not required

Q2338-5	Q2338-9
Q2338-6	Q2338-10
Q2338-6.5	Q2338-11
Q2338-7	Q2338-12
Q2338-8	Q2338-13



Old School Low Rider

Chefs, other kitchen roles and informal FOH

Q2311-3	Q2311-8
Q2311-4	Q2311-9
Q2311-5	Q2311-10
Q2311-6	Q2311-11
Q2311-7	



Grayson Mens Safety Antislip Trainer

Kitchens, informal FOH and cleaners where a protective toecap is not required

Q2344-5	Q2344-10
Q2344-6	Q2344-11
Q2344-7	Q2344-12
Q2344-8	Q2344-13
Q2344-9	



Cambridge II OB Mens Shoe Antislip

Formal FOH/Hospitality

Q2121-5	Q2121-10
Q2121-6	Q2121-11
Q2121-7	Q2121-12
Q2121-8	Q2121-13
Q2121-9	



Ambassador Mens Dress Antislip Shoe

Formal FOH/Hospitality

Q2346-6	Q2346-10
Q2346-7	Q2346-11
Q2346-8	Q2346-12
Q2346-9	



Soft Toe Overshoes Antislip

Overshoe with Compass sole unit for temps

Q2482-S	Q2482-L
Q2482-M	Q2482-XL



Unisex Tulsa Safety Hardshoe Antislip

Kitchen Porters, cleaners, security, grounds maintenance, buildings maintenance or kitchen roles where a non-metal protective toecap is required

Q2131-3	Q2131-8
Q2131-4	Q2131-9
Q2131-5	Q2131-10
Q2131-6	Q2131-11
Q2131-7	Q2131-12



Unisex Tampa Safety Trainer Antislip

Cleaners and general maintenance where a protective toecap is required - non-metal in particular

Q2132-3	Q2132-8
Q2132-4	Q2132-9
Q2132-5	Q2132-10
Q2132-6	Q2132-11
Q2132-7	Q2132-12



Unisex Jackson Safety Trainer Antislip

Cleaners and general maintenance where a protective toecap is required - non-metal in particular

Q2134-3	Q2134-8
Q2134-4	Q2134-9
Q2134-5	Q2134-10
Q2134-6	Q2134-11
Q2134-7	Q2134-12

Please quote the code for the style required followed by a dash and relevant size. e.g product code Q2338 in size 8, quote Q2338-8



Mens Hartford Safety Boot Antislip

Kitchen Porters, cleaners, security (where a non-metal protective toecap is required), grounds maintenance or buildings maintenance

Q2133-3
Q2133-4
Q2133-5
Q2133-6
Q2133-7
Q2133-8

Q2133-9
Q2133-10
Q2133-11
Q2133-12
Q2133-13



Uvex Trainer Style Boot SRC ESD

Security, cleaning, buildings maintenance, grounds maintenance, event maintenance and any other task where a non-metallic toecap is required

Q2310-3
Q2310-4
Q2310-5
Q2310-6
Q2310-7

Q2310-8
Q2311-9
Q2311-10
Q2311-11
Q2311-12



Sentinel Wellington Antislip White

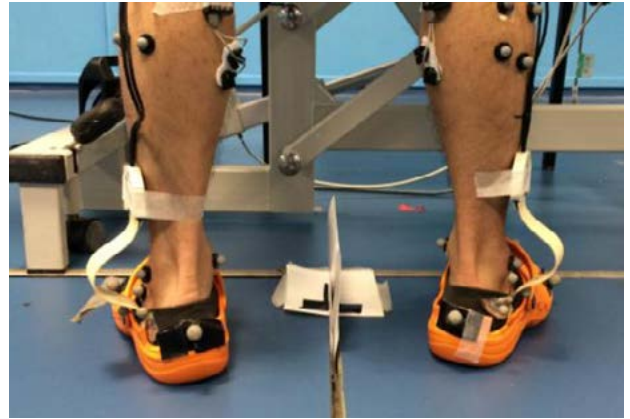
Wellington for food use

Q2128-4
Q2128-5
Q2128-6
Q2128-7

Q2128-8
Q2128-9
Q2128-10
Q2128-11

Please quote the code for the style required followed by a dash and relevant size. e.g product code Q2338 in size 8, quote Q2338-8

Introducing WearerTech FOOTWEAR



Compass have partnered with the specialist footwear brand WearerTech to offer the best footwear options for all their members of staff. WearerTech's mission is to help reduce pain for people who are on their feet all day at work specifically focused on catering and hospitality staff.

WearerTech work with the Knee, Ankle and Foot research centre at Salford University, studying what happens to the body when people are standing on their feet all day at work. Using this research, WearerTech have developed a range of shoes that provide outstanding slip resistance and unbeatable comfort all day, reducing pain and discomfort.



“ I want all my chefs and all our chefs in Compass Group to be comfortable on their feet”

Nick Vadis – Compass UK Culinary Director

<https://www.youtube.com/watch?v=zsVWhsEaHj0>

Got a question about WearerTech shoes?

Call our care team: 0800 7247414
compass@wearertech.com



This ground-breaking new range comes with a choice of three removable insoles for customisable comfort, its stylish twist means they're sure to be a popular choice with chefs and people working in kitchens as well as waiting

- Three removable insoles, designed to complement the natural contours of the feet and provide soft, medium or firm support. These need to be ordered separately see *(Choosing your insole grid, on page 5)*
- All the range features world-leading UltraGrip® soles to provide ultimate slip resistance
- Each shoe design incorporates a raised heel to improve body posture and reduce the pain and discomfort of long working days in a busy kitchen or restaurant.

CustomPro Relieve

Formal design lace-up shoe, available with or without steel toe cap.

- Excellent slip resistance
- Very lightweight
- Breathable uppers
- Raised heel to improve posture
- Personalised insoles
- Chef, Kitchen Staff, FOH



MUST BE ORDERED WITH SEPERATE INSOLES ON PAGE 8

Without Safety Toe	With Safety Toe
Q2493-3	Q2537-3
Q2493-4	Q2537-4
Q2493-5	Q2537-5
Q2493-6	Q2537-6
Q2493-6.5	Q2537-6.5
Q2493-7	Q2537-7
Q2493-8	Q2537-8
Q2493-9	Q2537-9
Q2493-10	Q2537-10
Q2493-10.5	Q2537-10.5
Q2493-11	Q2537-11
Q2493-12	Q2537-12

CustomPro Relieve

Formal design lace-up shoe, available with or without steel toe cap.

- Excellent slip resistance
- Very lightweight
- Breathable uppers
- Raised heel to improve posture
- Personalised insoles
- Chef, Kitchen Staff, FOH



MUST BE ORDERED WITH SEPERATE INSOLES ON PAGE 8



Without Safety Toe

- Q2615-3
- Q2615-4
- Q2615-5
- Q2615-6
- Q2615-6.5
- Q2615-7
- Q2615-8
- Q2615-9
- Q2615-10
- Q2615-10.5
- Q2615-11
- Q2615-12

CustomPro Transform

A trainer design for work, available with or without steel toe cap.

- Excellent slip resistance
- Very lightweight
- Breathable uppers
- Raised heel to improve posture
- Personalised insoles
- Chef, Kitchen Staff, FOH



MUST BE ORDERED WITH SEPERATE INSOLES ON PAGE 8



Without Safety Toe

- Q2496-3
- Q2496-4
- Q2496-5
- Q2496-6
- Q2496-6.5
- Q2496-7
- Q2496-8
- Q2496-9
- Q2496-10
- Q2496-10.5
- Q2496-11
- Q2496-12

With Safety Toe

- Q2540-3
- Q2540-4
- Q2540-5
- Q2540-6
- Q2540-6.5
- Q2540-7
- Q2540-8
- Q2540-9
- Q2540-10
- Q2540-10.5
- Q2540-11
- Q2540-12

CustomPro Vitalise

Slip on shoe available with or without steel toe cap.

- Excellent slip resistance
- Very lightweight
- Breathable uppers
- Raised heel to improve posture
- Personalised insoles
- Chef, Kitchen Staff, FOH



MUST BE ORDERED WITH SEPERATE INSOLES ON PAGE 8



Without Safety Toe

- Q2494-3
- Q2494-4
- Q2494-5
- Q2494-6
- Q2494-6.5
- Q2494-7
- Q2494-8
- Q2494-9
- Q2494-10
- Q2494-10.5
- Q2494-11
- Q2494-12

With Safety Toe

- Q2538-3
- Q2538-4
- Q2538-5
- Q2538-6
- Q2538-6.5
- Q2538-7
- Q2538-8
- Q2538-9
- Q2538-10
- Q2538-10.5
- Q2538-11
- Q2538-12

CustomPro Refresh

Open back clog with heel strap, available with or without steel toe cap.

- Excellent slip resistance
- Very lightweight
- Breathable uppers
- Raised heel to improve posture
- Personalised insoles
- Chef, Kitchen Staff, FOH



MUST BE ORDERED WITH SEPERATE INSOLES ON PAGE 8



Without Safety Toe

- Q2495-3
- Q2495-4
- Q2495-5
- Q2495-6
- Q2495-6.5
- Q2495-7
- Q2495-8
- Q2495-9
- Q2495-10
- Q2495-10.5
- Q2495-11
- Q2495-12

With Safety Toe

- Q2539-3
- Q2539-4
- Q2539-5
- Q2539-6
- Q2539-6.5
- Q2539-7
- Q2539-8
- Q2539-9
- Q2539-10
- Q2539-10.5
- Q2539-11
- Q2539-12



What type of foot arch do you have when standing?		
Low Arch	Medium Arch	High Arch

Choosing your insole

Personalise the comfort by choosing the insole to suit your foot for ultimate pain relief. Use this matrix to make the choice

How do you prefer a shoe to feel under the arch of your foot?	What type of foot arch do you have when standing?		
	Low Arch	Medium Arch	High Arch
Soft material with less support	Medium Insole	Soft Insole	Soft Insole
Medium firmness with some support	Firm Insole	Medium Insole	Soft Insole
Firm material for more support	Firm Insole	Firm Insole	Medium Insole

Soft	Medium	Firm
Q2499-3	Q2498-3	Q2497-3
Q2499-4	Q2498-4	Q2497-4
Q2499-5	Q2498-5	Q2497-5
Q2499-6	Q2498-6	Q2497-6
Q2499-7	Q2498-7	Q2497-7
Q2499-8	Q2498-8	Q2497-8
Q2499-9	Q2498-9	Q2497-9
Q2499-10	Q2498-10	Q2497-10
Q2499-11	Q2498-11	Q2497-11
Q2499-12	Q2498-12	Q2497-12

Protect

Protect Lightweight washable safety clog with a heel strap and a microfibre insole

- Very lightweight
- Safety toe cap
- Excellent slip resistance
- Moisture absorbing insole
- Chef, Kitchen Staff, FOH, Cleaning



- Q2541-3
- Q2541-4
- Q2541-5
- Q2541-6
- Q2541-6.5
- Q2541-7
- Q2541-8
- Q2541-9
- Q2541-10
- Q2541-10.5
- Q2541-11
- Q2541-12

Invigorate

Invigorate Lightweight washable clog with a moisture absorbing insole

- Very lightweight
- Excellent slip resistance
- Microfibre insole
- Chef, Kitchen Staff, FOH, Cleaning



- Q2500-3
- Q2500-4
- Q2500-5
- Q2500-6
- Q2500-7
- Q2500-8
- Q2500-9
- Q2500-10
- Q2500-11
- Q2500-12

EziKlog

EziKlog Lightweight washable clog

- Very lightweight
- Excellent slip resistance
- Chef, Kitchen Staff, FOH, Cleaning

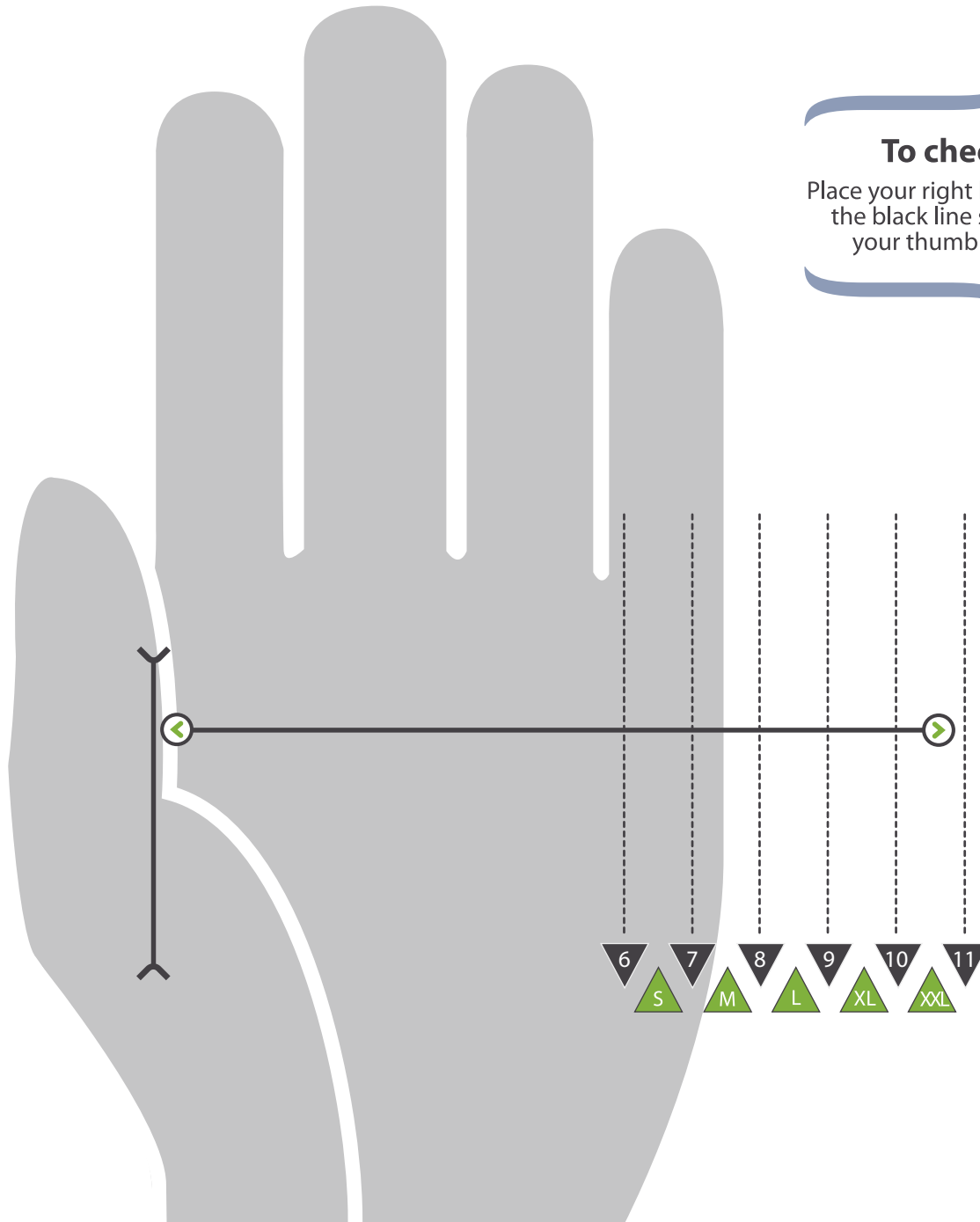


- Q2412-3
- Q2412-4
- Q2412-5
- Q2412-6
- Q2412-7
- Q2412-8
- Q2412-9
- Q2412-10
- Q2412-11
- Q2412-12



Hand Size Chart.

Print this page at 100%. A4



To check the size
Place your right hand on the diagram, the black line should be between your thumb and index finger.



Size		Glove size further to EN420	Hand (mm)		Glove
			Palm circumference	Length	Minimum Length
6	XS		152	160	220
7	S		178	170	230
8	M		203	182	240
9	L		229	192	250
10	XL		254	204	260
11	XXL		279	215	270

10 Globus Protection Glove Selection Guide

GLOVES



An effective addition to your colour-coded cleaning programme and brought to you by Globus... the leader in providing hand protection solutions to workers within UK industry.

Single Use For Light Chemical Exposure

- Excellent fingertip sensitivity
- Comfortable with a 'second skin' feel
- Textured finish on fingertips for improved grip Powder-free, non-sterile
- AQL 1.5
- CE category III approved
- Approved for food handling
- Latex free - ideal for people with Type I latex sensitivity
- Conforms to ASTM D6319-10 and D6124-06
- Length 240mm

Washroom Areas	Clinical, Treatment & Isolation Areas	Kitchen Areas	General Areas (Excluding washrooms, clinical areas and kitchens)
			
SKYTEC® RHODE	SKYTEC® TEXAS	SKYTEC® ALASKA	SKYTEC® UTAH



RED	YELLOW	GREEN	BLUE
Q2516-6	Q2515-6	Q2517-6	Q2200-S
Q2516-7	Q2515-7	Q2517-7	Q2200-M
Q2516-8	Q2515-8	Q2517-8	Q2200-L
Q2516-9	Q2515-9	Q2517-9	Q2200-XL
Q2516-10	Q2515-10	Q2517-10	



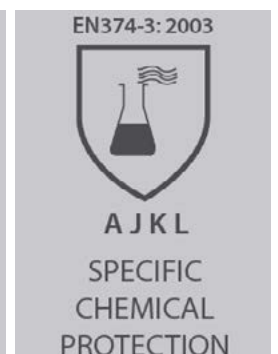


Gauntlet For Greater Chemical Exposure

- Flock-lined for extra comfort and to ease donning
- Textured palm and fingertips to enhance grip in wet conditions
- CE category III approved
- Chlorinated and sanitised to reduce odours
- Straight cuff
- Latex free - ideal for people with Type I latex sensitivity
- Length: 330mm

RED	YELLOW
Q2521-6	Q2518-6
Q2521-7	Q2518-7
Q2521-8	Q2518-8
Q2521-9	Q2518-9
Q2521-10	Q2518-10

GREEN	BLUE
Q2519-6	Q2520-6
Q2519-7	Q2520-7
Q2519-8	Q2520-8
Q2519-9	Q2520-9
Q2519-10	Q2520-10



Compass Hand Protection Toolkit Glove selection guide 10-11
 Hand Size Chart 9
 Hand Protection 12-16



Roll Cage Protection



Superior Quality Rigger Glove. For general handling.

Code	Colour	Size Range	Unit
Q2148	Red/Blue	STD	Pair



Perform Cut Level 3 Glove. A flexible, comfortable glove providing water and oil resistance with excellent grip.

Code	Colour	Size Range	Unit
Q2301	Orange	8, 9, 10, 11	Pair



Polyflex Hydro Blue Glove. A flexible, comfortable glove providing extra protection to the back of hand and excellent grip.
(Trace amounts of latex if allergic must be worn with Q2200 under.)

Code	Colour	Size Range	Unit
Q2335	Blue	6, 7, 8, 9, 10, 11	Pair

Burns / Scalds



Double Thickness Cotton Glove.
Nitrile grip pattern. Provides heat protection up to 250°C, XL, 34cm Pair

Q2140

Trace amounts of latex if allergic must be worn with Q2200 under.



Ultigrip Mitt
432mm

ED418



Ultigrip On Ventaial PPE San Jamar
PPE San Jamar, 15"

Q2527



Ultigrip Puppet Oven Mitt
38cm

ED604



Puppet Mitt
PPE San Jamar, 17"

Q2528



Cool Touch Mitt
PPE San Jamar, 330mm

Q2529



Cool Touch Mitt
PPE San Jamar, 381mm

Q2530



Cool Touch Mitt
PPE San Jamar, 432mm

Q2531



Cool Touch Mitt
PPE San Jamar, 610mm

Q2532



Puppet Mitt
PPE San Jamar, 330mm

Q2533



Puppet Mitt
PPE San Jamar, 381mm

Q2534



Puppet Mitt
PPE San Jamar, 432mm

Q2535



Puppet Mitt
PPE San Jamar, 24"

EC999

Site Safety



924 Green Nitri-Tech Glove

Porters (washing up) and tasks involving the use of chemicals where mid-arm protection only is required.

Q2418-7

Q2418-9

Q2418-8

Q2418-10



Hi-Quality Mens Kw Liner Glove

General purpose liner glove for use inside any glove where needed

Q2414



Heavy weight Sleeved PVC Gauntlet

Any task involving stronger chemicals - acids and alkalis

Q2422

Trace amounts of latex if allergic must be worn with Q2200 under.



Superior Quality Rigger Gloves

General purpose work where abrasion resistance if needed but not high on cut, tear or puncture

Q2148



Canadian H/Qred Back/Cuff Rigger

Rough handling tasks only where good abrasion and tear resistance needed, no liquid hazard and where dexterity is not important

Q2157



Disposable Oversleeve Blue 16" Catersafe, Pack of 100

Any kitchen/catering task where disposable oversleeves are required

Q2149



S-Tex KV3 Kevlar Gloves

Buildings maintenance/grounds maintenance or any task requiring high level of cut resistance

Q2154-8

Q2154-10

Q2154-9



Polyflex Hydro Blue Glove

For use particularly where there is potential to harm the back of the hand (Porters) or jobs with low risk but where a good fit is required (light maintenance work, light handling)

Q2335-6

Q2335-9

Q2335-7

Q2335-10

Q2335-8

Q2335-11



Black Pu Palm Coated Glove

Tasks where excellent dexterity and abrasion resistance are required but not for cut, tear or puncture risks e.g. handling of rough materials, light buildings maintenance tasks,

Q2167-8

Q2167-10

Q2167-9

Trace amounts of latex if allergic must be worn with Q2200 under.

Trace amounts of latex if allergic must be worn with Q2200 under.

Please quote the code for the style required followed by a dash and relevant size. e.g. product code Q2167 in size 8, quote Q2167-8



Skytec Michigan

Cut glove

Q2511-6
Q2511-7
Q2511-8

Q2511-9
Q2511-10
Q2511-11

Trace amounts of latex if allergic must be worn with Q2200 under.



Pu Palm Coated Cut 3 Orange Gloves

Moderate cut protection e.g. rough handling jobs, maintenance, lifting, moving of rough materials

Q2301-8
Q2301-9

Q2301-10
Q2301-11



Glove Kevlar M Grip Blue Dots Cut Level 3

Cut level 3 gloves with good grip e.g. buildings maintenance, handling of sharp objects (metal, glass), grounds maintenance (blades)

Q2232-M

Q2232-L

Trace amounts of latex if allergic must be worn with Q2200 under.



Versatouch Blue K/Wrist Glove Dotted Palm

Light protection only, very dextrous. For use alone or as a liner for handling frozen products or in refrigerated or chilled conditions in non-sterile and dry food handling e.g. kitchens, outdoor workers as a liner

Q2417



Pura Lined PVC Glove Yellow

Dextrous, ergonomic glove with chemical splash resistance e.g. cleaning and janitorial

Q2263-7
Q2263-8

Q2263-9



Utah Blue Powder Free Disposable Gloves pack of 100

Food handling disposable glove. Also good when re-fuelling, for any tasks with very light chemical splash, lightweight assembly work

Q2200-S
Q2200-M

Q2200-L
Q2200-XL



Turtleskin 330 CP Neon Insider Gloves-SNR

Protection from needlestick so mostly for cleaners and grounds maintenance as a liner or worn alone

Q2213-S
Q2213-M

Q2213-L
Q2213-XL

Trace amounts of latex if allergic must be worn with Q2200 under.



Turtleskin 530 CP Insider Gloves

Needlestick puncture resistance for the palm and fingertips. Used for waste management, recycling, cleaning/janitorial work. Provide Level 5 cut protection, can be used as a liner glove

Q2568-M
Q2568-L

Q2568-XL

Trace amounts of latex if allergic must be worn with Q2200 under.



747 Green Best Nitril Solve Gauntlet

Mid-arm length Nitrile gauntlets for use with chemicals and suitable for the food industry

Q2416-L
Q2416-XL

Q2416-XXL

Please quote the code for the style required followed by a dash and relevant size. e.g. product code Q2167 in size 8, quote Q2167-8



Pura Lined PVC Glove Green

Dextrous, ergonomic glove with chemical splash resistance e.g. cleaning and janitorial

- Q2253-7
- Q2253-8
- Q2253-9



Grip It Oil Firm Gloves

Dextrous glove with excellent grip properties, especially when handling oily or wet objects (not for full immersion of hand - see below for that). Also keeps hands warm e.g. grounds maintenance, buildings maintenance, event management, machinery repairs

- Q2333-7
- Q2333-8
- Q2333-9
- Q2333-10
- Q2333-11

Trace amounts of latex if allergic must be worn with Q2200 under.



Grip It Oil Gauntlet Gloves

Chemical resistant gauntlet for certain cleaning jobs, heavy machinery repair, maintenance work and any task where hazardous chemicals are handled or hands are immersed

- Q2334-8
- Q2334-9
- Q2334-10
- Q2334-11



GN560 Bodyguards Pink Glove BX100

Medical standard, dextrous, disposable glove with good mechanical strength. Medirest but not for food environments.

- Q2212-6.5
- Q2212-7.5
- Q2212-8.5

Please quote the code for the style required followed by a dash and relevant size. e.g product code Q2167 in size 8, quote Q2167-8



Protective Clothing	17-18
Hi-Visibility Clothing	18
Thermal Clothing	19



Pvc/Nylon Bib Type Apron (48 X 36) Pk 5

Kitchens and any tasks requiring chemical protection

Q2141



Polythene Disposable Bib Apron (Pk100)

Kitchens/catering use only

Q2158



Polythene Visitors Coat (Pk Of 25)

Visitor, temps and any tasks where clothing needs to be kept clean of dirt and dust

Q2163

Please quote the code for the style required followed by a dash and relevant size. e.g product code Q2142 in size S, quote Q2142-S



Blue Candex Disp Boilersuit Type 5 & 6

Tasks where protection from dust and light liquid splash is required (not chemicals) - painters, building work, event management.

Q2178-M
Q2178-L

Q2178-XL
Q2178-XXL



Polycotton Apron Ties

For use with aprons

Q2182



Portwest Traffic Jacket Yellow

Grounds maintenance, buildings maintenance, security

Q2142-S
Q2142-M
Q2142-L

Q2142-XL
Q2142-XXL
Q2142-XXXL



Hi-Vis Waterproof Trousers Saturn Yellow

Grounds maintenance, buildings maintenance, security and anywhere where moving vehicles are operating

Q2150-S
Q2150-M
Q2150-L

Q2150-XL
Q2150-XXL



Hi-Vis Waterproof Jacket Saturn Yellow

Grounds maintenance, buildings maintenance, security and anywhere where moving vehicles are operating

Q2151-S
Q2151-M
Q2151-L
Q2151-XL

Q2151-XXL
Q2151-XXXL
Q2151-XXXXL



Hi-Vis Executive Jacket EN471 Yellow

Grounds maintenance, buildings maintenance, security and anywhere where moving vehicles are operating

Q2161-S
Q2161-M
Q2161-L

Q2161-XL
Q2161-XXL
Q2161-XXXL



Hi-Vis Executive Waistcoat Yellow

Grounds maintenance, buildings maintenance, security and anywhere where moving vehicles are operating

Q2164-M
Q2164-L
Q2164-XL

Q2164-XXL
Q2164-XXXL



Hi-Vis Contractor Bomber Jacket Yellow

Grounds maintenance, buildings maintenance, security and anywhere where moving vehicles are operating

Q2211-S
Q2211-M
Q2211-L

Q2211-XL
Q2211-XXL
Q2211-XXXL



384067 Saturn Yellow EN471 Waistcoat

Grounds maintenance, buildings maintenance, security and anywhere where moving vehicles are operating

Q2214-M
Q2313-L
Q2313-XL

Q2313-XXL
Q2313-XXXL

Please quote the code for the style required followed by a dash and relevant size. e.g. product code Q2142 in size S, quote Q2142-S



CS10 Navy Coldstore Jackets

3/4 length jacket for use in fridges, cold stores and chilled areas

Q2216-S
Q2216-M
Q2216-L

Q2216-XL
Q2216-XXL
Q2216-XXXL



Navy Coldstore Coverall

For use in fridges, cold stores and chilled areas

Q2229-S
Q2229-M

Q2229-L
Q2229-XL



TRA 130 Mens Defndr III 3In1 Jckt Navy

Security, grounds maintenance and any roles where workers are predominantly working out of doors in all weathers. Can be worn with a hi-vis waistcoat over the top, if required

Q2294-S
Q2294-M
Q2294-L

Q2294-XL
Q2294-XXL
Q2294-XXXL



Thermal Long John 50/50 P/Cotton Blue

Any people working outside in cold weather e.g. security, buildings maintenance, grounds maintenance

Q2173-S
Q2173-M
Q2173-L

Q2173-XL
Q2173-XXL



Thermal S-Slv Vest 50/50 P/Cotton Blue

Any people working outside in cold weather e.g. security, buildings maintenance, grounds maintenance

Q2186-S
Q2186-M
Q2186-L

Q2186-XL
Q2186-XXL



Thermal L-Slv Vest 50/50 P/Cotton Blue

Any people working outside in cold weather e.g. security, buildings maintenance, grounds maintenance

Q2187-S
Q2187-M
Q2187-L

Q2187-XL
Q2187-XXL



Ballistic Trousers

Navy

Q2487-S
Q2487-M
Q2487-L

Q2487-XL
Q2487-XXL

Please quote the code for the style required followed by a dash and relevant size. e.g. product code Q2142 in size S, quote Q2142-S



PPE

Head Protection	20
Eye and Face Protection	21
Hearing Protection	21
Respiratory Protection	21-22
Site Safety	22



JSP Evo 3 Vented Helmet Orange

Q2559



JSP Evo 3 Vented Helmet Yellow

Q2558



JSP Evo 3 Vented Helmet White

Q2557



500V5CH510-OR
Forestry Headgear Orange

Q2360



Interex Helmet Mounted Ear Defenders (SNR28)

For above helmets Q2561 - elasticated chin strap (for above helmets)

Q2560



Elasticated Chinstrap

Q2561



Slim Goggles

Tasks where eye protection is required e.g. buildings maintenance, grounds maintenance, general maintenance, woodworking

Q2325



UVEX Ultrasonic Safety Goggles Orange/Grey

Deep cleaning and beer pipe cleaning in establishments using light chemicals, general maintenance

Q2143



Safety Spectacles Clear

Any task where light eye protection is required e.g. cleaning, buildings maintenance, grounds maintenance, event management

Q2303



First Base 3 Bump Cap - Navy

Any task where you could bump your head e.g. certain cleaning roles, event management

Q2304



E-A-R Neon Uncorded Ear Plugs (Bx250prs)

Jobs where a noise level reduction of 36dB or less is required (e.g. loud music events, power tool usage. Check noise risk assessment for max noise levels)

Q2155



Clarity Earplugs Honeywell Large (Pk10)

Jobs where a noise level reduction of 22dB or less is required (check noise risk assessment for details)

FA398



Clarity Earplugs Honeywell Small (Pk10)

Jobs where a noise level reduction of 22dB or less is required (check noise risk assessment for details)

FA399



Lasertrack Corded Earplug Pk 100

Traceable for food preparation areas where the noise level needs to be reduced by 35dB or less e.g. loud concerts, noisy events

Q2172



Peltor Optime II Ear Muffs

Any tasks where the noise level needs to be reduced by 31dB or less e.g. during loud concerts or loud building work, use of louder power tools

Q2188



Disposable P2 Valved Respirator (Box 10)

FFP2 Dust Masks protect against moderate levels of dust, as well as solid and liquid aerosols

Q2152



Fold Flat P2V Valved Respirator PK 10

FFP2 Dust Masks protect against moderate levels of dust, as well as solid and liquid aerosols

Q2293



3M 4255 Valved Reusable Half Mask FFP3 Single

28 day max usage, maintenance free (so no COSHH records required). Primarily for organic vapours and where dust is also a problem e.g. painting and sanding

Q2169



3M 4251 Valved Reusable Half Mask FFA1P2 Single

FFA1P2 respirator protects against moderate levels of dust as well as Organic vapours with good warning properties and b.pt >65 degrees C

Q2287



3M Particulate Valved Mask Box Of 10
Single use medium dust protection respirator e.g. buildings maintenance, woodwork

Q2184



R21234AX Blue 16" Overshoe Pack Of 100

Anywhere that disposable overshoes are required to avoid soiling of floors in buildings

Q2350



Beard Covers (Pk 100)

For use in catering and food preparation to avoid beard hair getting into food

Q2266



Brown Nylon Hairnet Ring (Pack 144)

Catering where protection from stray hair is required

Q2101



72145 Rect Utility Knife 9mm Soft Grip

Safety knife for a wide range of uses where a knife is required (not for food use)

Q2292



Box/Bag Opener Safety Knife

FA072



We've created the industry's first range of women's PPE!

Being safe and feeling comfortable is very important when you're working in a busy kitchen for hours at a time, but did you know the vast majority of women wear personal protective equipment (PPE) that hasn't been designed for them? That includes equipment like shoes, gloves, goggles, jackets and trousers.

We're proactively addressing the issue of PPE for women in the industry as well as being proud of supporting Compass Group UK & Ireland's 'Women in Food' campaign. Women in Food aims to attract more women to embark on a career with Compass, and the wider contract catering industry, with Compass Group UK & Ireland aiming to achieve gender parity in its chef population by 2020.

The idea to create a women's range of PPE first came when we realised there's a big gap in the market for women's PPE! We began to visit clients to further understand the issues women encounter with PPE. Through these site visits and collaboration with the Compass' Women in Food team, our health and safety teams, and Buzzi – our non-food product and services partner, we were able to create a fantastic new range of women's PPE to help meet the diverse needs of women in the workplace.

Our innovative women's range now includes: slip resistant shoes, cut resistant gloves, safety goggles and high vis jackets and trousers. We're not stopping there though, we will continue to work with our partners and clients to expand the range. If there's something you think we're missing, we'd love to hear from you.

Watch this space – it's just the beginning!

 *Women
In food*



Hi-Visibility Clothing

24-25



Rosemoor CL3 Breathable Lady Jacket Yellow

Female jacket for security, grounds maintenance, buildings maintenance and any roles where there is moving traffic

Q2313-XS
Q2313-S
Q2313-M

Q2313-L
Q2313-XL



Rosemoor CL3 Breathable Lady Jacket Orange

Female jacket for security, grounds maintenance, buildings maintenance and any roles where there is moving traffic

Q2314-XS
Q2314-S
Q2314-M

Q2314-L
Q2314-XL



**Pennymoor Lady Cargo Trouser
Yellow Reg**

Female jacket for security, grounds maintenance, buildings maintenance and any roles where there is moving traffic

Q2317-XS	Q2317-L
Q2317-S	Q2317-XL
Q2317-M	

Also available in 3XL, 4XL, 5XL & 6XL



**Pennymoor Lady Cargo Trouser
Yellow Short**

Female jacket for security, grounds maintenance, buildings maintenance and any roles where there is moving traffic

Q2318-XS	Q2318-L
Q2318-S	Q2318-XL
Q2318-M	Q2318-XXL

Also available in 3XL, 4XL, 5XL & 6XL



**Pennymoor Lady Cargo Trouser
Yellow Tall**

Female jacket for security, grounds maintenance, buildings maintenance and any roles where there is moving traffic

Q2319-XS	Q2319-L
Q2319-S	Q2319-XL
Q2319-M	Q2319-XXL

Also available in 3XL, 4XL, 5XL & 6XL



**Pennymoor Ladies Cargo Trouser
Orange Reg**

Female jacket for security, grounds maintenance, buildings maintenance and any roles where there is moving traffic

Q2320-XS	Q2320-L
Q2320-S	Q2320-XL
Q2320-M	Q2320-XXL

Also available in 3XL, 4XL, 5XL & 6XL



**Pennymoor Ladies Cargo Trouser
Orange Short**

Female jacket for security, grounds maintenance, buildings maintenance and any roles where there is moving traffic

Q2321-XS	Q2321-L
Q2321-S	Q2321-XL
Q2321-M	Q2321-XXL

Also available in 3XL, 4XL, 5XL & 6XL



**Pennymoor Ladies Cargo Trouser
Orange Tall**

Female jacket for security, grounds maintenance, buildings maintenance and any roles where there is moving traffic

Q2322-XS	Q2322-L
Q2322-S	Q2322-XL
Q2322-M	Q2322-XXL

Also available in 3XL, 4XL, 5XL & 6XL



**Hannaford Hivis Breath Lady Over
Trousers Yellow**

Female jacket for security, grounds maintenance, buildings maintenance and any roles where there is moving traffic

Q2323-XS	Q2323-L
Q2323-S	Q2323-XL
Q2323-M	Q2323-XXL

Also available in 3XL, 4XL, 5XL & 6XL

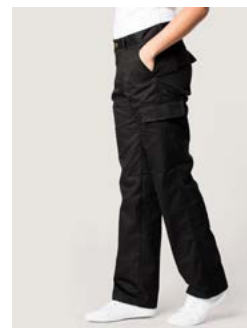


**Hannaford Hivis Breath Lady Over
Trousers Orange**

Female jacket for security, grounds maintenance, buildings maintenance and any roles where there is moving traffic

Q2324-XS	Q2324-L
Q2324-S	Q2324-XL
Q2324-M	Q2324-XXL

Also available in 3XL, 4XL, 5XL & 6XL



Ladies Cargo Trousers Navy

Security, cleaning, buildings maintenance, grounds maintenance, event maintenance

Q2179-S	Q2179-XL
Q2179-M	Q2179-XXL
Q2179-L	Q2179-XXXL



Overtrouser

SIZE	XS	S	M	L	XL	XXL	3XL	4XL	5X	6XL
UK LADIES SIZE	8	10	12	14	16	18	20	22	24	26
WAIST TO FIT (CM)	62-68	68-74	74-82	82-90	90-98	98-106	106-114	114-122	122-130	130-138

Cargo Trouser

UK LADIES SIZE	8	10	12	14	16	18	20	22	24	26
WAIST TO FIT (CM)	62-68	68-74	74-82	82-90	90-98	98-106	106-114	114-122	122-130	130-138

Jacket

SIZE	XS	S	M	L	XL	XXL
UK LADIES SIZE	6	8-10	12-14	16-18	20-22	24-26
CHEST TO FIT (CM)	79-82	82-90	90-98	98-106	106-114	114-122